



THE EXHIBITORS'™
**HAND
BOOK**
MODULAR DISPLAY SOLUTIONS

FAST.CLEAR.COMMUNICATION. **BANNER STANDS**

Largest selection of banner stand choices and options • Premium, mid-range and economy stands • Retractable, Telescopic and Spring Back options • Great quality • High-end functionality, features and durability • Specifically designed with unique styling points, giving an exceptional appearance • Multiple accessory and light options



BLADE LITE

23.5" WIDE BLD-LT-600

36" WIDE BLD-LT-920

47.25" WIDE BLD-LT-1200

59" WIDE BLD-LT-1500

- standard height = 83.25"
- four widths to choose from: 23.5", 36", 47.25", 59"
- premium top rail
- weighted base for stability
- adjustable leveling feet
- 3-piece bungee pole



PREMIUM RETRACTABLE BANNER STANDS

Premium Retractable banner stands provide superior, high-end functionality, features and durability, as well as unique styling points for exceptional appearance. Premium banners include a protective, molded carry bag and feature a lifetime hardware warranty.



IMAGINE

31.5" WIDE IMG-800-S

- variable graphic height = 29.5" - 83.35"
- graphic tensioner
- integrated pole storage
- interchangeable graphic cassette
- adjustable feet on base
- telescopic pole
- shown with optional literature pocket accessory (AKIT-1L)



BARRACUDA

31.5" WIDE silver: BCD-800-S
black: BCD-800-B

- variable graphic height = 29.5" - 83.35"
- anodized silver or black base options
- graphic tensioner
- integrated pole storage
- adjustable feet on base
- telescopic pole
- shown with optional literature pocket and tabletop (AKIT-1S1L)



ADVANCE

31.5" WIDE ADV-800-S

- variable graphic height = 29.5" - 83.35"
- double sided
- graphic tensioner
- integrated pole storage
- interchangeable graphic cassette
- adjustable feet on base
- telescopic pole
- shown with optional light Lumina 2 (LUM-2-1)



EXCALIBUR

31.5" WIDE silver: EXC-800-S
black: EXC-800-B

- variable graphic height = 29.5" - 83.35"
- double sided
- anodized silver or black base options
- graphic tensioner
- integrated pole storage
- adjustable feet on base
- telescopic pole
- shown with optional tabletop accessory (AKIT-1S)





STANDARD RETRACTABLE BANNER STANDS

Standard Retractable banner stands incorporate customary features designed to provide everyday reliability, durability and ease of use. Standard banners include a mid-range canvas carry bag and typically feature a five-year to lifetime hardware warranty.



ORIENT 1

31.5" WIDE	silver: ONT-800-S-3 black: ONT-800-B-3
35.5" WIDE	silver: ONT-920-S-3 black: ONT-920-B-3
39.25" WIDE	silver: ONT-1000-S-3 black: ONT-1000-B-3

- standard graphic height = 83.25"
- anodized silver or black base options
- molded end caps
- adjustable feet on base
- 3-piece bungee pole



ORIENT 2

31.5" WIDE	silver: ONT-800-DBL-S-3 black: ONT-800-DBL-B-3
35.5" WIDE	silver: ONT-920-DBL-S-3 black: ONT-920-DBL-B-3
39.25" WIDE	silver: ONT-1000-DBL-S-3 black: ONT-1000-DBL-B-3

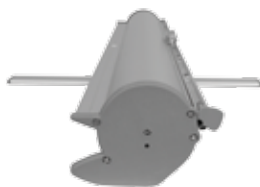
- standard graphic height = 83.25"
- double-sided
- anodized silver or black base options
- molded end caps
- adjustable feet on base
- 3-piece bungee pole



PACIFIC

31.5" WIDE	PAC-800-S-2
35.5" WIDE	PAC-920-S-2
39.25" WIDE	PAC-1000-S-2

- standard graphic height = 83.75"
- anodized silver base
- molded end caps
- swivel-out foot
- 3-piece bungee pole



CONTENDER

23.5" WIDE	silver: CN-24-S black: CN-24-B
29.5" WIDE	silver: CN-30-S black: CN-30-B
35.5" WIDE	silver: CN-36-S black: CN-36-B
47.5" WIDE	black: CN-48-B

- standard graphic height = 77.5"
- swivel-out foot
- silver or black base options
- laser cut steel ends & swaged pole



STANDARD RETRACTABLE BANNER STANDS

Standard Retractable banner stands incorporate customary features designed to provide everyday reliability, durability and ease of use. Standard banners include a mid-range canvas carry bag and typically feature a five-year to lifetime hardware warranty.



ELEVATE

33.25" WIDE ELEVATE

- over 8' tall
- variable graphic height = 37.75" - 95.25"
- roller access via flip-top lid and removable self-locking graphic roller
- black aluminum body with chrome end caps
- telescopic pole (4 segments)



BLADE LX

33.5" WIDE BLD-LX-GRY

- standard graphic height = 83.25"
- anodized gunmetal base
- removable self-locking graphic roller
- graphic slider
- adjustable feet on base
- premium top rail
- 3-piece bungee pole



ORCHID

33.5" WIDE ORCHID

- standard graphic height = 76.75"
- quick to assemble and easy to use
- bamboo base, rail and pole are a sustainable & eco-friendly choice
- slide graphic rail
- 3-piece pole



BLOK

33.5" WIDE BLOK-850

- standard graphic height = 79.25"
- black base with chrome end caps
- 3-piece bungee pole





ECONOMY RETRACTABLE BANNER STANDS

Economy Retractable banner stands incorporate basic design features, functionality and reliability. Economy banners include a basic carry bag and feature a 90-day hardware warranty.



START

31.25" WIDE STRT-800

- standard graphic height = 79.25"
- snap top graphic rail
- swivel foot
- anodized silver base
- 3-piece bungee pole



FREEDOM

31.5" WIDE FRDM-800

39.25" WIDE FRDM-1000

- standard graphic height = 79.25"
- snap top graphic rail
- 3-piece bungee pole



RETRACTOR 4

32.75" WIDE RTRC-4

- standard graphic height = 78.25"
- double sided
- snap top graphic rail
- 3-piece bungee pole



RETRACTOR 5

36" WIDE RTRC-5

- standard graphic height = 79.375"
- velcro graphic application
- snap top graphic rail
- 3-piece bungee pole



ECONOMY RETRACTABLE BANNER STANDS

Economy Retractable banner stands incorporate basic design features, functionality and reliability. Economy banners include a basic carry bag and feature a 90-day hardware warranty.



shown at maximum
and minimum heights



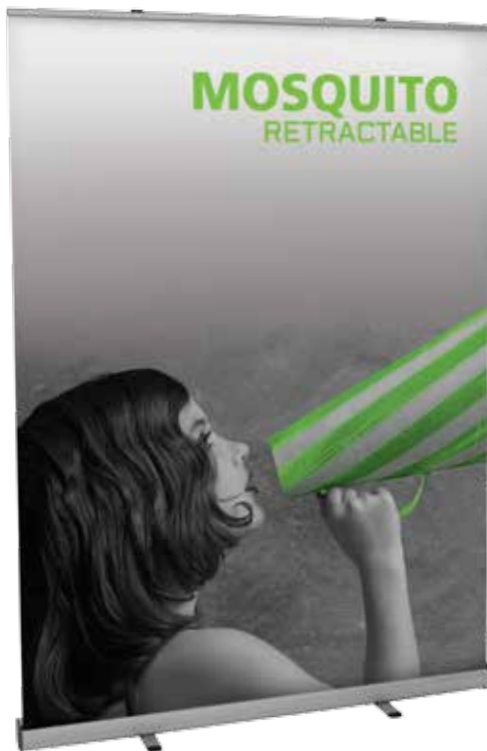
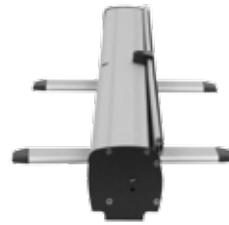
GIANT MOSQUITO

35.5"
WIDE

MSQT-GIANT-920-S

NEW

- variable graphic height = 68" - 122"
- anodized silver base
- swivel-out foot
- snap top graphic rail
- adjustable telescopic pole
- heavy duty, weighted stand



MSQT-1500



MSQT-1200



MSQT-800-S

MOSQUITO

31.5"
WIDE

silver: MSQT-800-S
black: MSQT-800-B

47.25"
WIDE

silver: MSQT-1200

59"
WIDE

silver: MSQT-1500

- standard graphic height = 78.5"
- anodized silver or black base options (800mm only)
- swivel-out foot & snap top graphic rail
- 800mm unit is supplied with one bungee pole per unit, 1200mm and 1500mm come with two bungee poles per unit





ECONOMY RETRACTABLE BANNER STANDS

Economy Retractable banner stands incorporate basic design features, functionality and reliability. Economy banners include a basic carry bag and feature a 90-day hardware warranty.

QUICKWALL

31.5" silver: QWK-S
WIDE black: QWK-B

- standard graphic height = 78.5"
- unit width: 32"
- graphic width: 31.5"
- anodized silver or black base options
- kit includes 3 Mosquito 800 banner stands and 1 OCB banner stand case
- snap top graphic rail

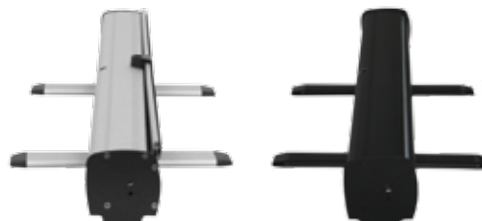


QUICKSTAND

31.5" silver: QWK-STND-S
WIDE black: QWK-STND-B

NEW

- standard graphic height = 78.5"
- anodized silver or black base options
- kit includes 1 Mosquito 800 banner stand, 1 OCB banner stand case, and 1 Lumina 12-C banner stand light
- swivel-out foot
- snap top graphic rail
- 3-piece bungee pole



STANDARD TELESCOPIC BANNER STANDS



Standard Telescopic banner stands incorporate customary features designed to provide everyday reliability, durability and ease of use. Standard banners include a mid-range canvas carry bag and typically feature a one-year hardware warranty.

PEGASUS MINI

27.5"-48" WIDE silver: PGSUS-MIN-S
black: PGSUS-MIN-B

PEGASUS

52.5"-95" WIDE silver: PGSUS-S
black: PGSUS-B

- variable graphic height = 36" - 96"
- single or double-sided graphics
- allows for custom size graphics
- easy to store
- steel feet for stability
- telescopic pole for adjustable graphic width and height



Pegasus Mini

Pegasus

DASH

31.5" WIDE single sided: DSH-M-1
double sided: DSH-M-2

- variable graphic height = 31.5" - 78.5"
- stable, anodized aluminum
- quick & easy to erect



DASH MEGA

36" WIDE single sided: DSH-ME
double sided: DSH-ME-2

- variable graphic height = 36" - 93.5"
- stable, anodized aluminum
- quick & easy to erect





STANDARD TELESCOPIC BANNER STANDS

Standard Telescopic banner stands incorporate customary features designed to provide everyday reliability, durability and ease of use. Standard banners include a mid-range canvas carry bag and typically feature a one-year hardware warranty.



DASH LITERATURE POCKET

31.5" WIDE DSH-M-LR

- recommended graphic height = 44"
- 3 pocket literature dispenser option to attach to a Dash unit



UNO

31.5" WIDE UN-1-ST

35.5" WIDE UN-1-MG

48" WIDE UN-1-MO

- variable graphic height = 35" - 85.5"
- powder coated black weighted base



TELESCOPIC 1

23.5" WIDE TEL-1-A

- variable graphic height = 36" - 70"
- single or double sided



TELESCOPIC 4

31" WIDE TEL-4

- standard graphic height = 77"
- telescopic pole



STANDARD SPRING BACK BANNER STANDS

Standard Spring Back banner stands incorporate customary features designed to provide everyday reliability, durability and ease of use. Standard banners include a mid-range canvas carry bag and typically feature a one-year hardware warranty.

LIGHTNING
31" WIDE LTNG

- standard graphic height = 77"
- snap-lock graphic rails
- 3-piece bungee pole

Icons: Dollar sign (\$), Briefcase, Recycle symbol, and One Year warranty star.



ECONOMY SPRING BACK BANNER STANDS

Economy Spring Back banner stands incorporate basic design features, functionality and reliability. Economy banners include a basic carry bag and feature a 90-day hardware warranty.



SPRING 1-1

23.5" WIDE SB-1-1

- graphic height = 59" or 78"



SPRING 1-2

26.5" WIDE SB-1-2

- graphic height = 59" or 78"



SPRING 1-3

35.125" WIDE SB-1-3

- graphic height = 59" or 78"



SPRING 3

27.5" WIDE SB-3

- standard graphic height = 70.75"
- #3 grommets in corners
- single or double sided



ECONOMY SPRING BACK BANNER STANDS

Economy Spring Back banner stands incorporate basic design features, functionality and reliability. Economy banners include a basic carry bag and feature a 90-day hardware warranty.



SPRING 4

27" WIDE SB-4

- standard graphic height = 62.25"
- #3 grommets in corners



SPRING 6

24.5" WIDE SB-6

- standard graphic height = 63"
- #3 grommets in corners



SPRING 7

29.5" WIDE SB-7

- variable graphic height = 61.5" - 69"
- #3 grommets in corners



SCROLLER

28.75" WIDE SC-1

- variable graphic height = 48" - 72"
- top scrolling mechanism allows for a variety of lengths and styles
- utilizes standard 110v power

AERO



- indoor modular display system
- adjustable heights & angles
- shown with optional Lumina 200 floodlights
- available "à la carte" to create more combinations

Aero Basic Kit:

AERO-1200-BASIC

- comes with 3 1200mm cassettes and 4 uprights with base

Aero Complete Kit:

AERO-1200-KIT

- comes with 3 1200mm cassettes in an OCH2 case and 2 120 watt lights, no graphics (must ship freight)



configurations above shown with additional panels and lights

YOUR ONE STOP SHOP FOR PORTABLE EXHIBITS & DISPLAYS



tension fabric displays • kiosks • popup displays • truss • outdoor displays
hopup displays • banner stands • extrusion based exhibits
cases • literature racks • hanging structures • lighting • wayfinding signage
tablet stands • counters • table throws • folding panel displays
www.exhibitors-handbook.com